
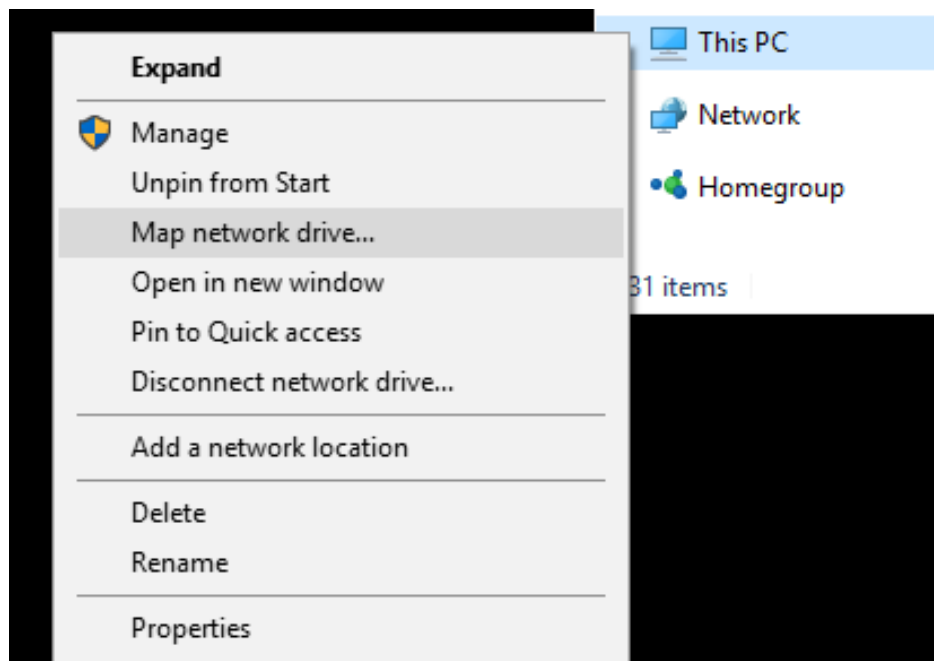


Mapping Your Laptop to the H2D Software Folder on your Desktop

Your laptop and desktop must be on the same network.

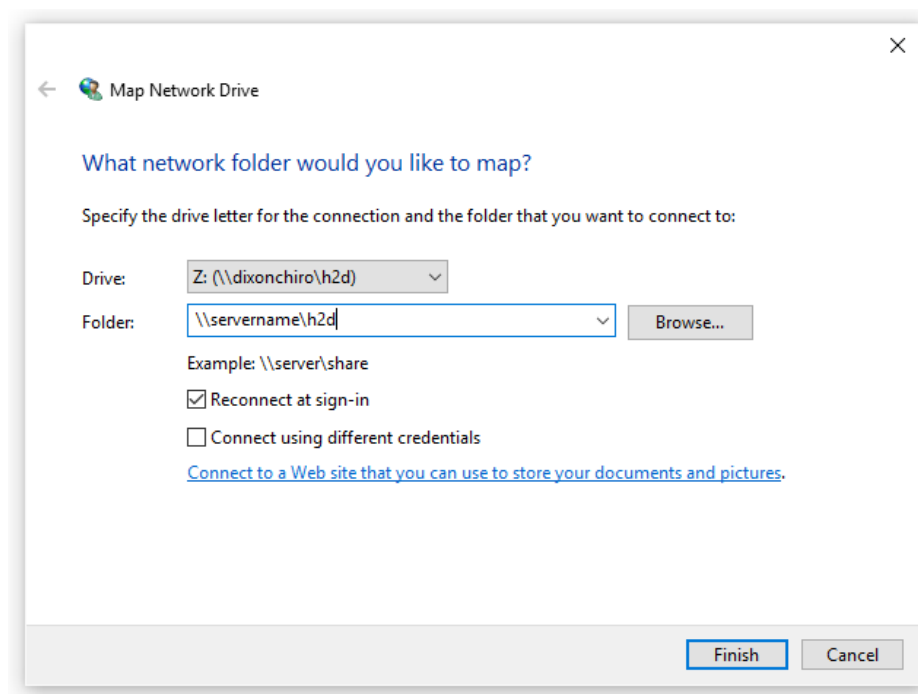
Open your file explorer: click on the folder on your taskbar  .



Look for "This PC" on the left side menu.

Right click on "This PC"

Select "Map Network Drive..."



Select Drive "Z:"





Type "\\servername\h2d"

Servername = Server desktop computer's name

Click on "Finish"



Mapping Your Laptop to the H2D Software Folder (Continued)

<input type="checkbox"/> Name	Date modified	Type
 Control	2/19/2016 1:58 PM	File folder
 Import	8/25/2014 11:28 AM	File folder
 patient	3/12/2016 4:58 PM	File folder
 System	2/18/2016 3:53 PM	File folder

The H2D folder should open automatically. You should see these folders and your H2D Software should now work on your laptop.

If you need any assistance in this process or any other H2D Software related issue, please do not hesitate to contact us.

Jason Dixon, D.C.
H2D Software, LLC
817-647-5088
Jason.dixon@h2dsoftware.com
www.h2dsoftware.com